

LARGE THININSTALL™ DUAL SWING ARM WALL DISPLAY MOUNT - 25" EXTENSION



Certifications	UL Listed
Color	Black
Lateral Shift	406 mm
Manual Height Adjustment	25.4 mm
Maximum Extension	635 mm
Maximum Screen Thickness	12.7 mm
Minimum Depth	38.1 mm
Mounting Pattern Compatibility (Universal Versions)	100 x 100 mm - 800 x 400 mm
Orientation	Landscape
Overall Dimensions (HxWxD)	527 x 749 x 38 mm
Pivot (numerical value)	±90° (depending on screen width)
Post-Installation Leveling (Roll)	Yes
Shipping Weight	25 kg
Solution Type	Universal
Tilt	+ 0°, - 15°
Typical Screen Sizes*	37 - 58"
Weight Capacity	56.7 kg



Color option:



*Always check compatibility with the Chief mountfinder on the Chief website.

SPECIFICATIONS

- Low profile Mount design has 38 mm depth when collapsed.
- For LED, LCD displays with max 127mm depth
- 63,5 cm maximum extension
- Provides up to 15° of fingertip tilt.
- 2.5 degrees post installation display levelling
- Post-installation lateral shift allows up to 406 mm of adjustment left and right
- Fully integrated cable management. Enclosed, tool-free cable covers
- Wide open wall plate design for power outlet and signal cables routing.
- 25mm of post installation height adjustment
- Compatible with dedicated AV component shelves and AV camera shelves
- Universal Screen interface is included.
- Mount is fully assembled.
- VESA compatible: 100 x 100 – 800 x 400 mm
- Overall Dimensions (HxWxD): 527 x 749 x 38 mm
- Weight capacity: 56.7 kg per display
- Color: Black
- Certifications: UL

RECOMMENDED ACCESSORIES



PAC525

In-Wall Storage Box for organized, recessed space for routing excess cables and attaching power.



PAC526

Large In-Wall Storage Box for organized, recessed space for routing excess cables and attaching power.

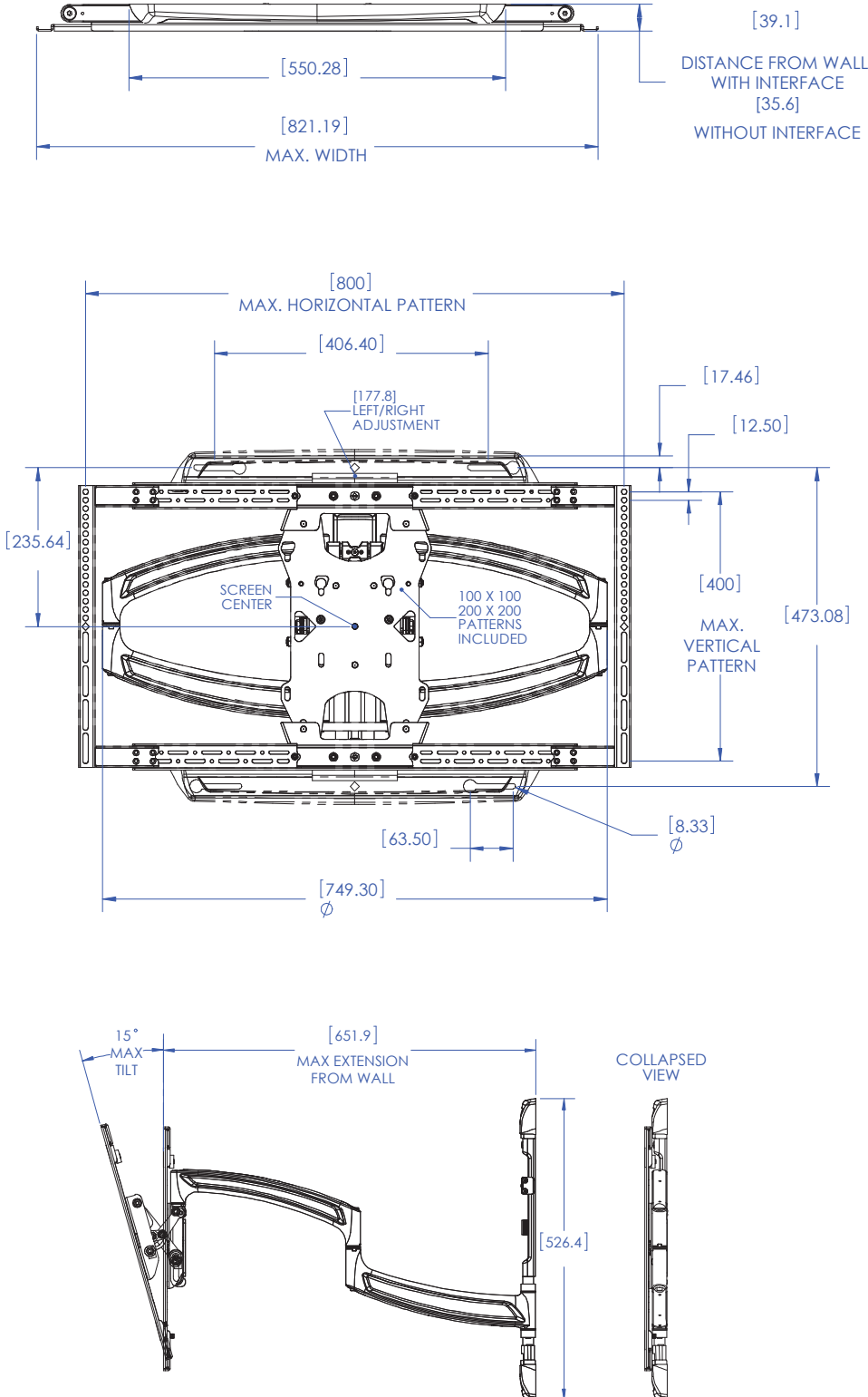
TS525TU

CAD DRAWINGS / DESIGN ESSENTIALS

CAD Drawings, installation instructions, BIM files are online available at www.chiefmfg.com/design.

TECHNICAL DRAWINGS

Dimensions in mm.



TS525TU

A BRAND OF MILESTONE AV TECHNOLOGIES - www.chiefmfg.com

USA P 800.582.6480 / +1.952.225.6000 - F 877.894.6918 / +1.952.894.6918 - chief@chiefmfg.com
 Canada P 877.345.4329 - F 888.377.5314 - canadainfo@milestone.com
 EMEA P +31 495 580 840 - F +31 495 580 845 - emea.sales@milestone.com
 Asia Pacific P +852 2145 4099 - F +852 2145 4477 - asia.chief@milestone.com

