

86-inch Class 4K UHD LCD Display

## TH-86EQ1W

TENTATIVE

### ● Product specification (design and specification subject to change without notice)

#### ■ DISPLAY PANEL

Screen Size (Diagonal)	85.6-inch (2174 mm)
Panel type / Backlight	IPS / Edge-LED
Aspect ratio	16:9
Effective Display Area (W x H)	1895 x 1065 mm
Resolution (H x V)	3840 x 2160
Brightness	350 cd/m <sup>2</sup> (Typ)
Contrast Ratio	1400:1 (Typ)
Dynamic Contrast Ratio	(T.B.D.)
Response Time	8.0 ms (Typ) (G to G)
Viewing Angle (Horizontal / Vertical)	178° / 178° (CR≥10)
Panel Life Time*1	(T.B.D.)

\*1 When the panel lifetime is at 50% of the brightness under the condition of 25 degrees Celsius (+/- 2 degrees Celsius).

#### ■ CONNECTION TERMINAL

HDMI IN	HDMI Type A Connector x 2	Linear PCM (Sampling frequency : 48 kHz/44.1 kHz/32 kHz)
VIDEO/AV IN	4-pole Mini Jack (M3) x 1 Video: 1.0 V [p-p] (75 Ω) Audio: Mini Jack (M3) x 1 / x 1 0.5 V [rms]	
DVI-D IN	DVI-D 24-pin x 1	Compliance with DVI Revision 1.0 Compatible with HDCP 1.1
PC IN	Mini D-Sub 15-pin x 1 (Female)	Y/G : with sync 1.0 V [p-p] (75 Ω) : without sync 0.7 V [p-p] (75 Ω) P <sub>B</sub> /C <sub>B</sub> /B : without sync 0.7 V [p-p] (75 Ω) P <sub>R</sub> /C <sub>R</sub> /R : without sync 0.7 V [p-p] (75 Ω) HD/VD : 1.0 - 5.0 V [p-p] (high impedance)
SERIAL IN	D-sub 9pin x 1, RS-232C Compatible	
AUDIO IN	Stereo Mini Jack (M3) x 1 (Shared with DVI-D IN and PC IN)	0.5 V [rms]
AUDIO OUT	Stereo Mini Jack (M3) x 1 Variable (-∞ - 0 dB) (1 kHz 0 dB Input, 10 kΩ Load)	0.5 V [rms]
LAN	RJ45 x 1 compatible with PLink™ RJ45 10BASE-T/100BASE-TX/1000BASE-T (T.B.D.)	
USB	USB Type A Connector x 1, DC 5 V/2A (USB 3.0 is supported)	

#### ■ AUDIO

Built in Speaker	20W (10W+10W) 8Ω
------------------	------------------

#### ■ ELECTRICAL

Power Requirements	AC 110 - 240 V 50 Hz / 60 Hz
Power Consumption	(T.B.D.)
On Mode Average Power Consumption*	(T.B.D.)
Power Off Condition	approx. 0.3 W
Stand-by Condition	approx. 0.5 W
Apparent power	(T.B.D.)

\*Based on IEC 62087 Ed.2 measurement method

#### ■ MECHANICAL

Dimension (W x H x D)	1928 x 1099 x 86 mm (not including handles 76 mm)
Weight	approx. 64 kg (T.B.D.)
Bezel Color	Black
Bezel Width	T/R/L/B 15.2 mm
Carton Dimensions (W x H x D)	2224 x 1427 x 373 mm (T.B.D.)
Gross Weight	approx. 83 kg (T.B.D.)
Cabinet Material	Front: Metal / Back: Metal
Pitch for Wall-Hanging	VESA Compliant 600 x 400 mm (Installed by: M8 screws / Screw hole depth (T.B.D.))

#### ■ INSTALLATION

Orientation	Landscape / Portrait (T.B.D.) : (Rotation: T.B.D.) (T.B.D.)
Tilting Angle	(T.B.D.)

\*Please contact your sales representative with regard to the tilt angle before installation.

\*When you install the product upright, be sure to make the power lamp of the main body come to the upper side.

#### ■ ENVIRONMENTAL

Operating Environment	Temperature	: 0°C to 40°C*1
	Humidity	: 20% to 80% (No condensation)
	Altitude	: 0 to 2800 m*2
Storage Environment	Temperature	: -20°C to 60°C
	Humidity	: 20% to 80% (No condensation) (T.B.D.)

\*1 : for up to 1400 m altitude

\*2 : Depending on the temperature or humidity conditions, uneven brightness may be observed. This is not a malfunction.

• This unevenness will disappear while applying current continuously. If not, consult the distributor.

**MAIN FEATURE**

USB Media Player	Yes
Failover/Fallback	Yes
Data Cloning	Yes
Digital Zoom	Yes
Power ON Screen Delay	Yes
1:1 Pixel mode	Yes
Screen Saver	Yes
Power Management	Yes (HDMI/PC/DVI-D)
Power save	Yes
Button Lock	Yes
Remote-control User Level	Yes
Input Search	Yes
Picture mode	Yes
Dynamic contrast	Yes
Color enhancement	Yes
Refine enhancer	Yes
Gradation smoother	Yes
Set up timer	Yes
AMX D.D.	Yes
Crestron Connected™	Yes
WEB Browser control	Yes
PJLink	Yes
Image settings	Yes
Input Detection	Yes
HDMI CEC Compatible	Yes
Memory Viewer	Yes
Playlist Editing Function	Yes
Operating Time*1	24h / day

\*1 In case of running for a long time, the moving image is recommended to be displayed. If you display a still picture for an extended period, the image retention might remain on the screen. However, image retention can gradually disappear by displaying movie images.

**REMOTE CONTROL TRANSMITTER**

Power Requirements	DC 3 V (2 x AAA Size batteries)
Operating distance	approx. 7 m*
Weight	approx. 63 g including batteries
Dimensions (W x H x D)	48 x 134 x 20 mm

\*When operated directly in front of receptor.

**STANDARD (CERTIFICATIONS)**

SAFETY REGULATIONS	
RADIATION REGULATIONS	

**INCLUDED ACCESSORIES**

- Remote Control
- Batteries (AAA size) x 2
- AC cord (approx. 2.0 m)
- CD-ROM / User Manual
- Operating Instruction Book

**COMPATIBLE SOFTWARE**

Multi Monitoring & Control Software
CMS Content Management Software
Video Wall Manager

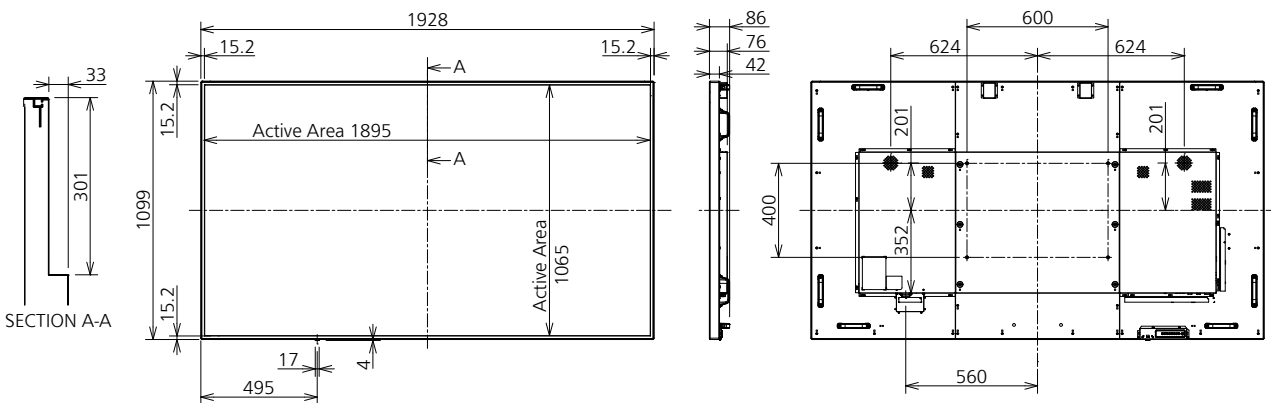
**OPTIONAL ACCESSORIES**

Early Warning Software*	ET-SWA100series
Basic license / 3-year license	(Depending on the license type, the symbol at the end of the part number is different.)

\* Multi-Monitoring Control Software Ver 2.0 or later is required.

**DIMENSIONS (TENTATIVE)**

Cautions: This drawing is not a scale  
Units : mm



**CONNECTION TERMINAL**

(T.B.D.)

\* Specifications and appearance are subject to change without notice.