

Turnkey Solution for Multi-window Presentations

The ET-MWP100G Panasonic Multi-Window Processor (option) makes it possible to quickly and efficiently combine multiple displays and projectors into a video wall or a multi vision system. The ET-MWP100G can be used to build a wide range of creative, impressive images that were never before possible, including video walls, digital signage, TV studio displays, and live stage screens.

Major Features

- Single or multiple output layouts and multiple canvases
- Simultaneous use of multiple layouts and canvases
- One or more windows (PinPs) on each canvas with 360° rotation of each window
- 16 interface board slots
- Low power consumption of max 160 W* with 16 interface boards mounted
- Bezel area adjustment capable for flat panel displays



Multi-Window Processor
ET-MWP100G (Option)

*When using a single power supply unit.
The power consumption becomes180 W when the optional ET-RPS100G power supply unit is added.

Product specification(Tentative)

Model No.	TH-55LFV70
DISPLAY	
Screen Size (Diagonal)	55-inch (1,387mm)
Aspect Ratio	16:9
Panel Type	IPS / DIRECT LED
Number of Pixels (H x V)	1,920 x 1,080 pixels
Brightness (Typ)	700 cd/m²
Contrast Ratio	1,200 : 1
Resposns Time	12 ms (G to G)
Dynamic Contrast Ratio	T.B.D.
Viewing Angle (Horizontal/Vertical)	178°/178°
Panel Surface Treatment	Anti-glare treatment (Haze 44%)
CONNECTION TERMINAL	
VIDEO In	BNC x 1 (Shared with Component Y In)
Audio In (L/R)	Pin Jack x 1 set (Shared with Component In)
HDMI In	HDMI Type A Connector x 1
Component In	BNC x 3 (Y/Pb/Pr)
Audio In (L/R)	Pin Jack x 1 set (Shared with VIDEO In)
DVI-D In	DVI-D 24-pin x 2
Audio In (L/R)	3.5mm Stereo Mini Jack x 1 (Shared with PC In)
DisplayPort In	DisplayPort x 1
PC In	D-Sub 15-pin x 1 (Female)
Audio In (L/R)	3.5mm Stereo Mini Jack x 1 (Shared with DVI-D In)
USB	USB (Type A) x 1
CONTROL	
Sereial In/Out	D-Sub 9-pin x 2/x 2, RS-232C Compatible
DIGITAL LINK In	RJ45 x 1
DIGITAL LINK Out	RJ45 x 1
IR In/Out	3.5 mm Mini Jack x 1/x 1
LAN	RJ45 x 1 (Shared with DIGITAL LINK In)
AUDIO	
Line Out (L/R)	Pin Jack x 1 set
External Speaker	8 Ω, 20 W [10 W + 10 W]
ELECTRICAL	
Power Requirements	110-127/220-240 V AC, 50/60 Hz
Power Consumption	T.B.D.
Stand-by Conditions	T.B.D.
MECHANICAL	
Dimensios (W x H x D)	T.B.D.
Bezel to Bezel	3.5 mm
Weight	T.B.D.
ENVIRONMENTAL	
Operating Environment	Temperature: 0 °C to 40 °C (32 °F to 104 °F)/ Humidity: 10% to 90% (Non Condensation)



Weights and dimensions shown are approximate. Specifications and appearance are subject to change without notice. Product availability differs depending on region and country. This product may be subject to export control regulations. HDMI, the HDMI logo, and High-Definition Multimedia Interface are trademarks or registered trademarks of HDMI Licensing LLC in the United States and other countries. All other trademarks are the property of their respective trademark owners. Images on screen are simulated. © 2014 Panasonic Corporation. All rights reserved

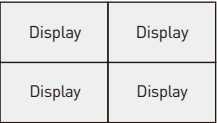


Output Pattern Example

■ Multiple picture in picture



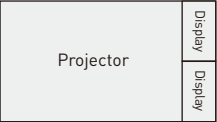
Four displays



■ Free layout for different display device



Projector and displays



Included Accessories

AC power cord (2m), Remote control, Batteries, Operating instruction book, Cat5 Cable, Wire clampers, Connector Cable of remote control with receiver, CD-ROM (Operation instruction)

Optional Accesories

Installation Mount
TY-VK55LV1



Preliminary
Ultra Narrow Bezel LED Display
55-inch **TH-55LFV70**

An Ultra Narrow Bezel Video Wall with Installation Flexibility and High Reliability



- 1 Installation Flexibility
- 2 High Reliability
- 3 High Visibility

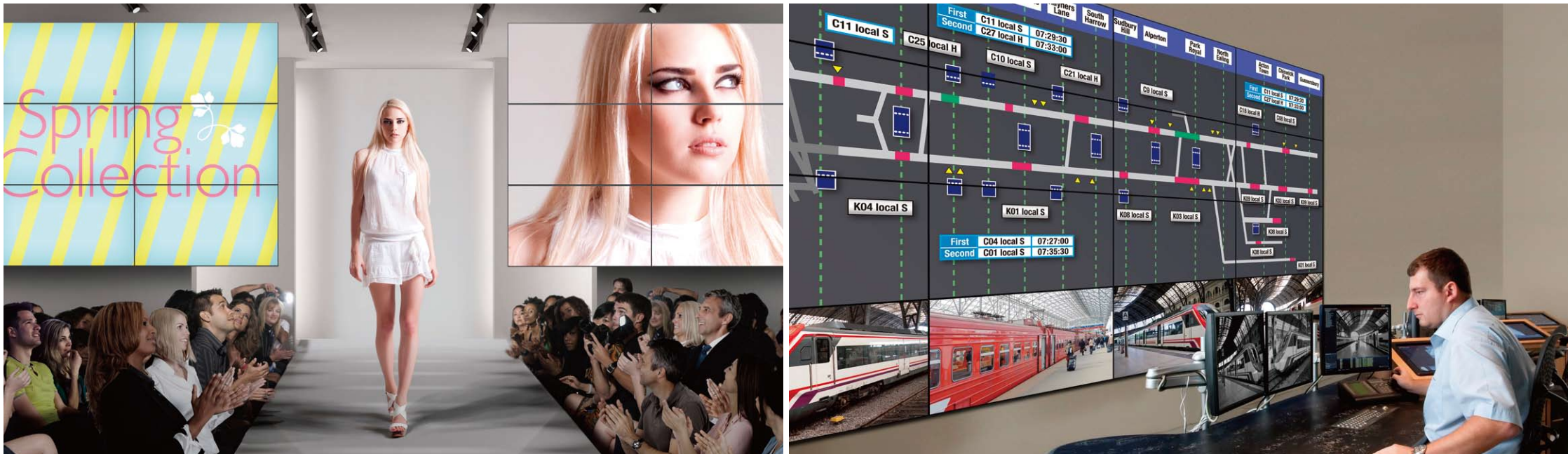
High-brightness model
TH-55LFV70



All information included here is valid as of May 2014.

CT14-G03PF-LFV
Printed in Japan.

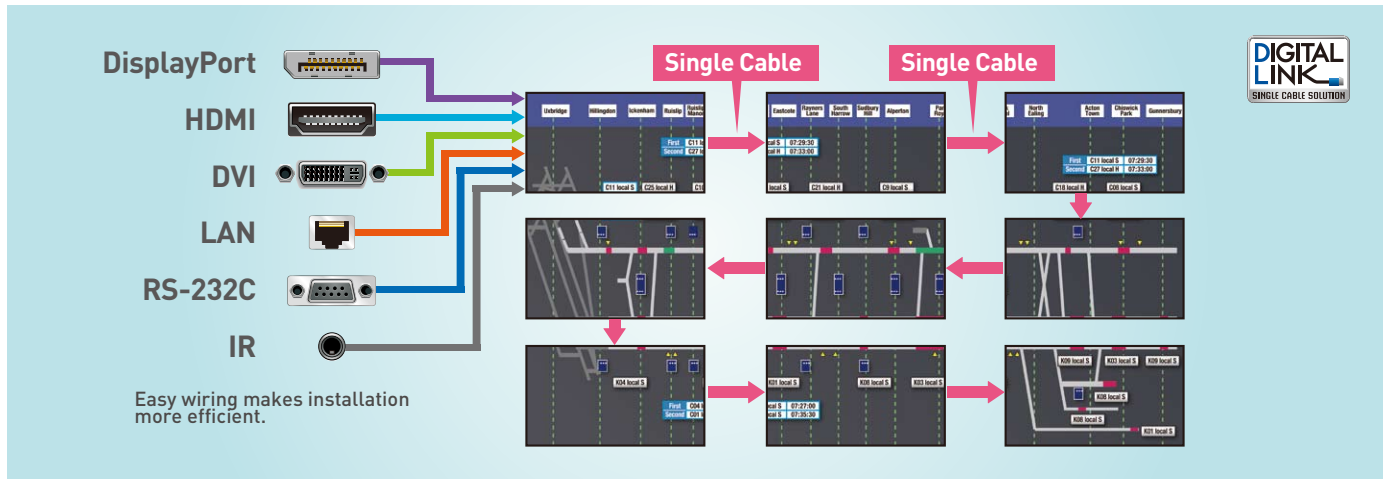
Install a reliable multi-screen system wherever you want.



Video, Audio, and Control Signals Can Be Distributed by DIGITAL LINK Single Cable Daisy Chain

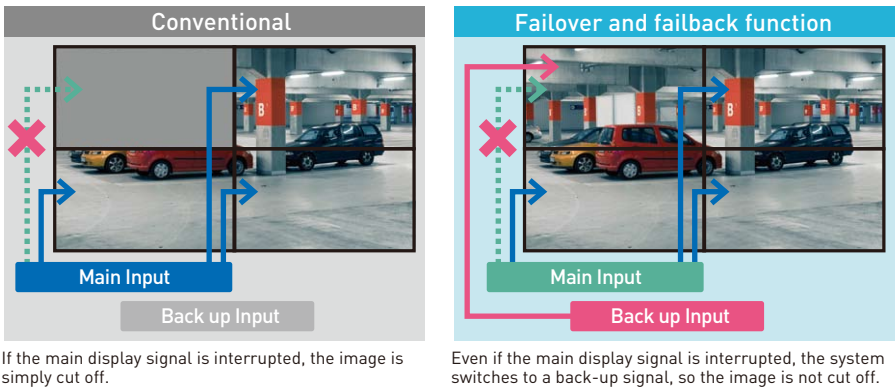
The terminal board for the LFV70 Series is equipped with a DIGITAL LINK output terminal. Video, audio and control signals are combined into one DIGITAL LINK signal and can be transmitted by single cable daisy chain connection.

This enables not only a multi-screen system to be configured using only displays and video sources with no need for a video splitter or other device, but also easy installation and control of multi-screen system thanks to simple cabling.



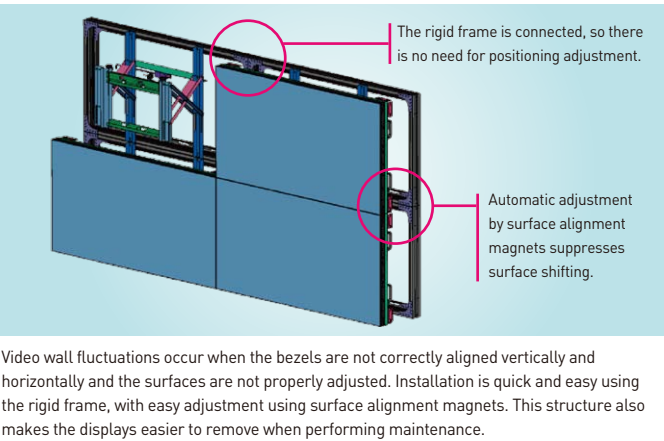
Failover and Failback Functions Support Emergency Situations

The LFV70 Series is equipped with digital signal input terminals of two DVI-D, HDMI, DisplayPort, DIGITAL LINK, and USB. If the main video and audio signals are interrupted, the system immediately switches to alternative signals. This makes it ideal for mission critical control rooms and surveillance centers.



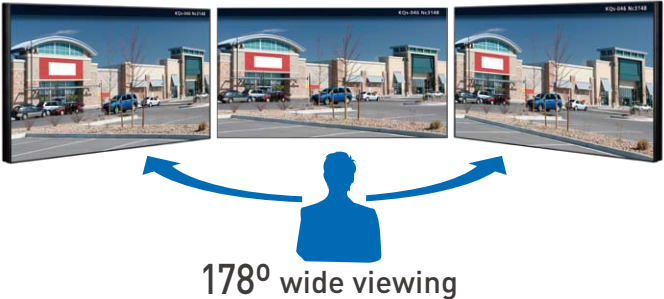
Installation Frame Simplifies Set-up

The optional Installation Mount makes it much easier to configure a video wall. There's no need for complicated display positioning, and fluctuations between installers are covered. It also saves time and cuts labor costs.



A Wide Viewing Angle with the IPS Panel

No information is lost when viewed from right or left angles, and images are clear and easy to see.



USB Easy Synchronized Playing

Simply connect USB memory sticks containing still contents files to a 2 x 2-unit multi-screen configuration for easy synchronized 4K signages.



High Reliability Enables Continuous 24-Hour Operation and Portrait Installation

The use of a highly durable panel and electronic components allows continuous 24-hour operation, ideal for installation in public places, surveillance stations, etc. A built-in cooling fan automatically operates (when set to Auto) depending on the temperature. This prevents overheating in the upper screens of a multi-screen installation, which are easily subject to heating. The TH-55LFV70 can also be installed either horizontally or vertically, without any difference in panel life, so there is no effect on TCO.



* In case of long time, the moving image is recommended to be displayed. If you display a still picture for an extended period, the image retention might remain on the screen. However, image retention can gradually disappear by displaying a moving images.



Calibration Functions Support Multi-Screen Installation

New calibration software

Color differences can develop between displays as time passes after multi-screen installation. This new calibration software supports sensors that are sold by a variety of suppliers. It lets you adjust colors while using your existing calibration sensor.

Pre-calibration

The color is adjusted on the LFV70 Series when it is shipped from the factory so there is no adjustment necessary during installation, which greatly shortens the time required for multi-screen installation. Color differences between the displays are also suppressed in order to display natural-appearing images.

*In some cases, visual adjustment is necessary during multi-screen installation.



An Ultra-Narrow Bezel for Seamless, Large-Screen Layouts

The ultra-narrow bezel results in joints that are only 3.5 mm (0.14") wide for video wall installations. Even in large-screen configurations, the screen borders can barely be seen, so images are powerful and natural.

