

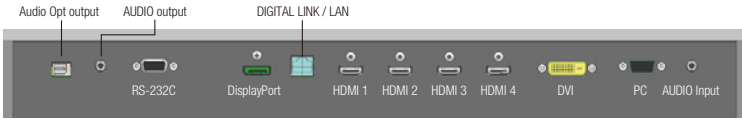
SPECIFICATIONS (TENTATIVE)

Model no.	TH-98LQ70	TH-84LQ70
DISPLAY PANEL		
Screen Size (Diagonal)	98.0-inch	84.0-inch
Panel Type	IPS / D-LED	IPS / E-LED
Aspect Ratio	16:9	
Effective Display Area (W × H)	2,159 × 1,215 mm (85.0" × 47.9")	1,861 × 1,047 mm (73.3" × 41.3")
Number of Pixels (H × V)	3,840 × 2,160 pixels	3,840 × 2,160 pixels
Brightness (Typ)	500 cd/m ²	500 cd/m ²
Contrast Ratio	1,300:1	1,400:1
Respones Time	8 ms (G to G)	12 ms (G to G)
Viewing Angle (Horizontal/Vertical)	178° / 178°	178° / 178°
CONNECTION TERMINAL		
HDMI In	HDMI TYPE A Connector×2 (Up to 4K@50/60Hz) ^{*1} HDMI TYPE A Connector×2 (Up to 2K@50/60Hz) ^{*1}	
DisplayPort In	DisplayPort×1 (DP1.2a) ^{*1}	
DVI-D In / Audio In (L/R)	DVI-D 24-pin×1/Pin Jack ×1 set	
PC In / Audio In (L/R)	D-sub 15-pin×1 (Female) ^{*2} /Pin Jack×1 set	
Function Slot	YES	
CONTROL		
Serial In / Out	D-sub 9-pin×1 / ×1, RS-232C Compatible	
LAN	RJ45×1 100BaseTX, Compatible with P_Link™ (Shared with DIGITAL LINK)	
DIGITAL LINK	RJ45×1 (Shared with LAN)	
AUDIO		
Audio Out	Stereo Mini Jack (M3) ×1	
Optical Out	Optical out×1	
Built in Speaker	20 W [10 W + 10 W]	
ELECTRICAL		
Power Requirements	110-127 V / 220-240 V AC, 50 / 60 Hz	
Power Consumption	T.B.D.	T.B.D.
MECHANICAL		
Dimensions (W×H×D)	2,233×1,288×122 mm (87.9"× 50.7"× 4.8") ^{*3}	1,949×1,141×99 mm (76.7"× 44.9"× 3.9") ^{*3}
Bezel Width	32.5 mm (1.3")	32.5 mm (1.3")
Weight	Approx. 140 kg (308.7 lbs.) ^{*4}	Approx. 100 kg (220.5 lbs.) ^{*4}
Protective Glass	YES	YES
ENVIRONMENTAL		
Operating Environment	Temperature: 0°C to 40°C (32F to 104F) / Humidity: 20% to 80% (Non condensation)	

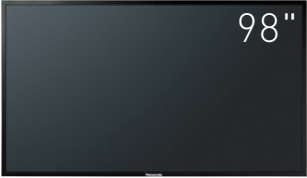
^{*1}: HDCP supported, Embedded audio supported
^{*2}: RGB/YpPr switchable

^{*3}: Accuracy ±5 mm (±0.2")
^{*4}: Accuracy ±10 kg (±22.1 lbs)

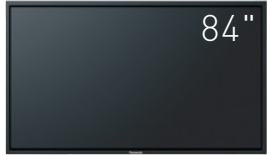
Connection Terminal (T.B.D.)



Weights and dimensions shown are approximate. Specifications and appearance are subject to change without notice. Product availability differs depending on region and country. This product may be subject to export control regulations. The PLink trademark is an application trademark in Japan, the United States, and other countries and regions or registered trademarks. HDMI, the HDMI logo, and High-Definition Multimedia Interface are trademarks or registered trademarks of HDMI Licensing LLC in the United States and other countries. HDBaseT™ is a trademark of the HDBaseT Alliance. All other trademarks are the property of their respective trademark owners. Images on screen are simulated. © 2014 Panasonic Corporation. All rights reserved.



TH-98LQ70



TH-84LQ70

OPTIONAL ACCESSORIES

Terminal Board

3G-SDI Terminal Board
*Require 2 boards for up to 4K/60p
Require 1 board for up to 4K/30p

Pedestal

TY-ST103PF9 (for 98-inch model)
TY-ST85P12 (for 84-inch model)

Wall-hanging Bracket

TY-WK103PV9 (for 98-inch model)
TY-WK85PV12 (for 84-inch model)

Ceiling-hanging Bracket

TY-CE103PS10 (for 98-inch model)
TY-CE85PS12 (for 84-inch model)

Mobile Stand

TY-ST85PB1 (for 84-inch model)



For more information about Panasonic Professional Displays, please visit:
Professional Display Global Website – panasonic.net/prodisplays
YouTube – www.youtube.com/PanasonicProDisplay

All information included here is valid as of June 2014.

CT14-G02-PF-LQ Printed in Japan.



Preliminary
LQ Series



TH-84LQ70



TH-98LQ70

Durable and Professional 4K Large Displays



*Actual resolution : 3840 × 2160p

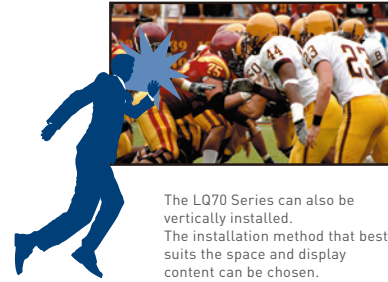
Panasonic's Large 4K displays offer excellent durability for professional use.

While offering extended operation under even the harshest conditions, they provide bright, crisp, high-resolution images. Their 4K quality ensures intricately detailed, large-screen images with a dynamic scale. Even fine text and textures are reproduced with sharp, high clarity.

High Durability

Durability is Realized by a Dedicated Design Especially for Professional Use

The LQ Series features a protective glass panel on the front of the display, and an aluminum cabinet. Its superb impact resistance allows safe, reliable use in places where many people pass by. It can also be vertically installed with no effect on lamp life, allowing for highly flexible installation. The LQ Series is ideal for rental use, where the display is frequently transported and set up.



High Reliability Enables Continuous 24/7 Operation

In addition to being impact resistant, the LQ Series is capable of constant, 24/7 operation. It offers reliable use in public spaces where many people gather, such as train stations, airports, and shopping malls, as well as installation in control rooms. It is also equipped with a variety of input/output terminals for versatile applications.

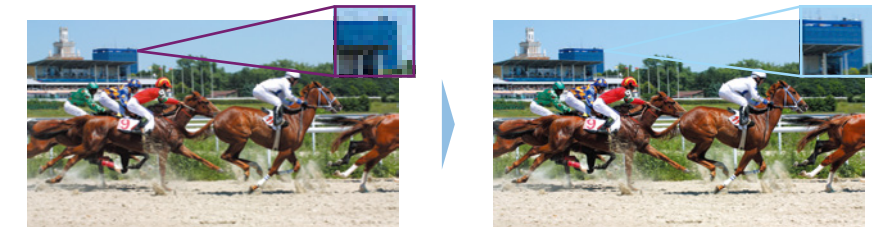
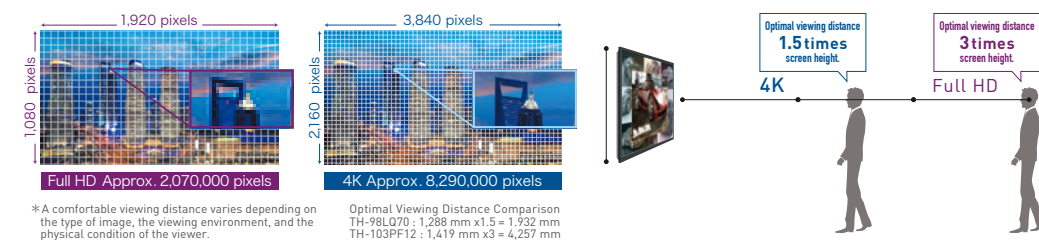


*In case of long time, the moving image is recommended to be displayed. If you display a still picture for an extended period, the image retention might remain on the screen. However, image retention can gradually disappear by displaying a moving images.

Excellent 4K Image Quality

Stunning Panasonic 4K Quality Right Down to the Details

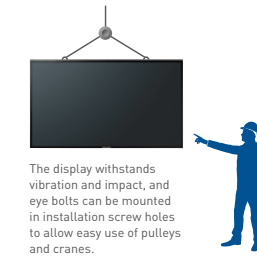
With approximately 8,290,000 pixels, or about four times the pixels of a Full-HD display, the high resolution of the LQ Series produces extremely detailed images. This dynamic, large-screen display achieves true-to-life images. With an optimal viewing distance of 1.5 times the screen height, it's an excellent choice for meeting rooms, where images are often viewed up close, and for creating impressive ambience in signage applications, where it can be expected to attract considerable attention from people passing by.



Flexibility and System Expandability

Flexible Installation with Easy Use of Peripheral Devices

The screw holes and installation positions for the LQ Series match those of previous Panasonic large-screen plasma displays, so peripheral devices, including third-party brands, can be used as they are. Since existing brackets can be used when replacing a plasma display, you save time and reduce costs.



The display withstands vibration and impact, and eye bolts can be mounted in installation screw holes to allow easy use of pulleys and cranes.

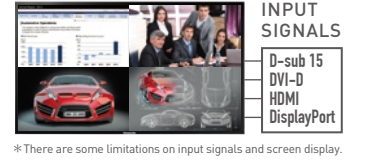
New Slot* for Versatile 4K Input

A new slot enables easy interface switching to match a variety of uses. A 4K interface will also be available in the future. Customizing interfaces let you easily expand business possibilities.

*3G-SDI is supported by an optional terminal board.

Four Video Formats on a Single Screen

Four different video format signals can be displayed on the same screen. Versatile, standard-equipped terminals allow easy quad-display operation on a single screen.



A wide range of professional applications

• Public Information



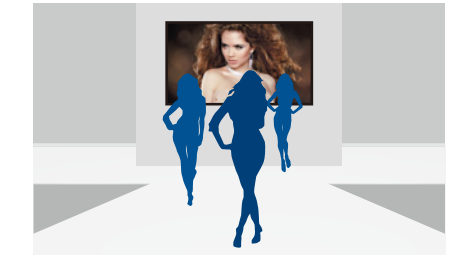
The high-resolution screen is ideal for fine text in airport flight displays and train schedules. The rugged design also provides excellent durability.

• Store signage



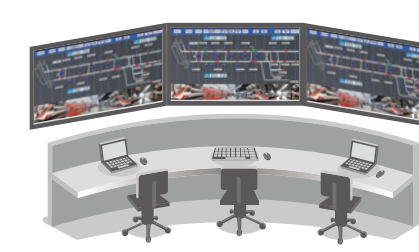
Product details and textures are very true-to-life. The outstanding expression of the large 4K display effectively captures attention.

• Rental & staging



Superb durability and easy installation allow for safe and secure use in events. High-quality images and the large-screen presence raise the level of excitement.

• Control rooms



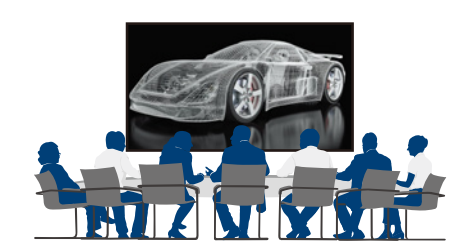
The high resolution and large screen size make previously difficult-to-see images sharp and clear. It's ideal for monitoring, because even slight movements can be easily detected. It's also fully capable of 24/7 operation.

• Broadcast studios



The beautiful large screen provides sharp, real-life images. An optional terminal board enables SDI connection.

• Meeting rooms



The large-screen display provides clear visibility even for meetings with a lot of people attending, and high-definition images are ideal for design and simulation use.