

VINCI5-W

5" two-way 6 ohms hi-fi loudspeaker,
white



VINCI5 is a fabulous and prestigious loudspeaker offering outstanding performance and value for money. With its unique design and breathtaking sound purity, the VINCI5 loudspeakers are the right choice to create the perfect ambience.

Each component was carefully ear-chosen and tested, which resulted in an ultra linear performance that guarantees a pure sound experience. Apart VINCI5 sets a new standard in affordable reference bookshelf speakers and is made of high class components that look great with or even without the removable (magnetic) grille.

The VINCI5 bass reflex cabinet speaker produces a pure and detailed bass sound and has also superb control of mid-range and high frequencies.

The Apart VINCI5 has been designed for a wide range of installation applications; from home theater living rooms to class rooms or boardrooms, from fancy restaurants to high level prestige residential projects. To make our VINCI Series complete, Apart also developed a smaller VINCI4, a bigger VINCI7 loudspeaker and a high class integrated amplifier, VINCI2125.

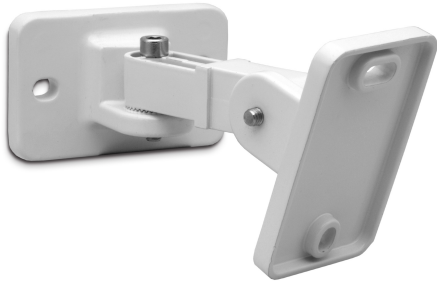
TECHNICAL SPECIFICATIONS

height in mm	254	width in mm	176
depth in mm	198	loudspeaker system	2-way
woofer size in inch	5,25	woofer cone material	kevlar
tweeter size in inch	0,75	mounting system	accessory
colour	black / white	impedance in ohms	6
low impedance dynamic power in watts	160	SPL 1W/1m in dB	86
max SPL 1m in dB	108	frequency response in Hz	60 - 25K
main construction material	mdf wood	grille main material	cloth
IP rating	20	applicable low impedance	Yes
applicable in 100V	No	Net weight product (kg)	3,50

MORE PICTURES

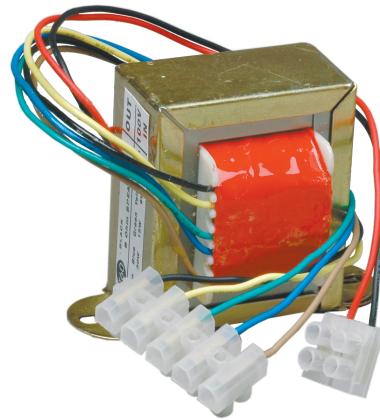


ACCESSORIES



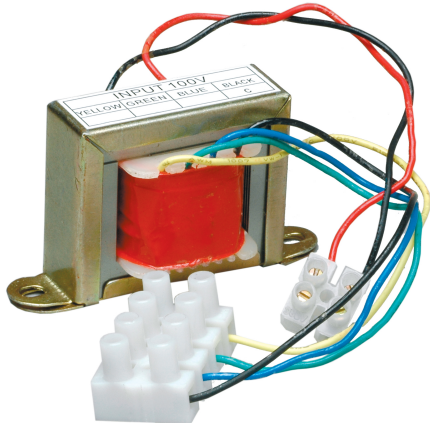
VINCIBRA-W

Bracket for VINCI4-W & VINCI5-W



T60

8 ohms / 100 volt transformer, 60 watts



T20

8 ohms / 100 volt transformer, 20 watts